

Japan and ATLAS detector



Japan is a major contributor in developing Geant4, a standard simulation tool kit.



Test with cosmic-rays at Kobe University.



TGC chambers were tested using CERN SPS beam.



Soldering many thin wires.
Japan built 1100 TGC chambers.



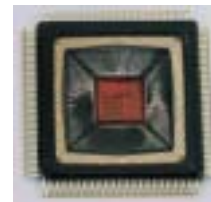
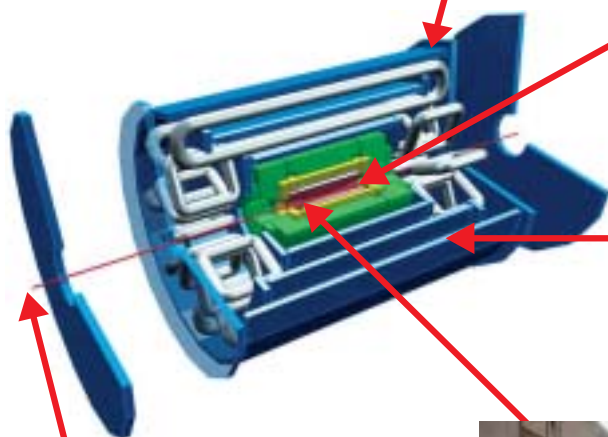
LHC physics study with graduate students.



Weekly KEK meeting for ATLAS SCT work.



Four Si-sensors assembled with 1 micron accuracy.
Japan made 980 SCT modules.



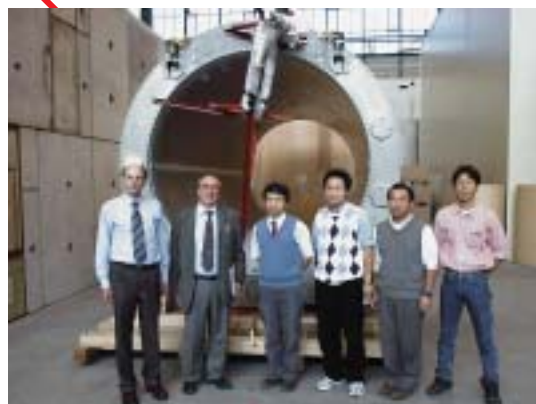
KEK designed a TDC ASIC for ATLAS muon drift tubes.



A prize was awarded for excellent VLSI design.



KEK developed and fabricated 18 superconducting quadrupole magnets which will focus the LHC beam at the ATLAS and CMS interaction points.



Celebrating the delivery of the ATLAS central solenoid magnet from Japan!
(Sept. 2001).



ATLAS central solenoid magnet under construction at Toshiba in Japan.